

TRANSEPT

TRM TYPE TRANSFER SYSTEM

OUR NEWLY BORN
PRODUCT !

The success of all TRANSEPT products is due to a number of factors including unsophisticated technology, simple design, ergonomics, commitment to quality of material used in the manufacturing, easy maintenance, customer service, reliability and performance of the entire range.

TRM TYPE TRANSFER SYSTEM

- Our newly born system is a conventional double way system fitted with rollers chains.

- The workpiece carriers of 500x500mm to 1000x1000mm can transport up to 110kg each.

The workpiece carriers are fitted with pads and roll along the sections (on the chain rollers).

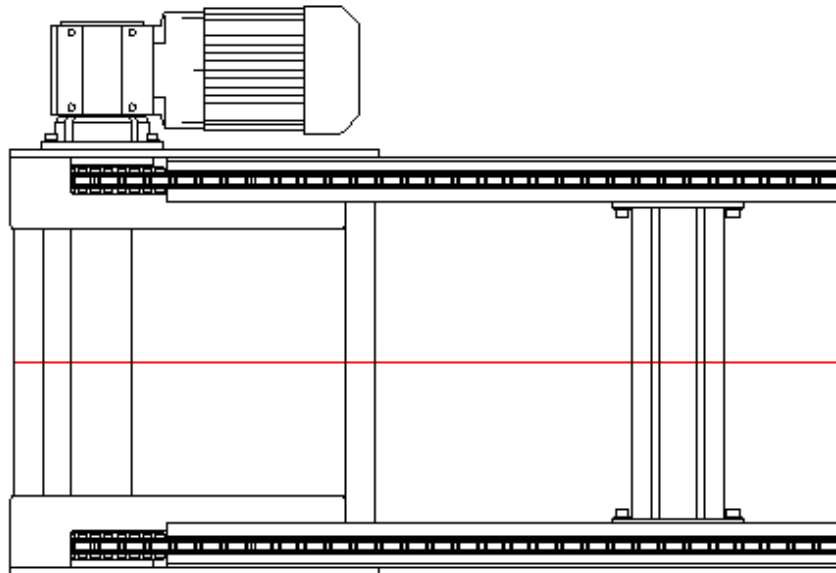
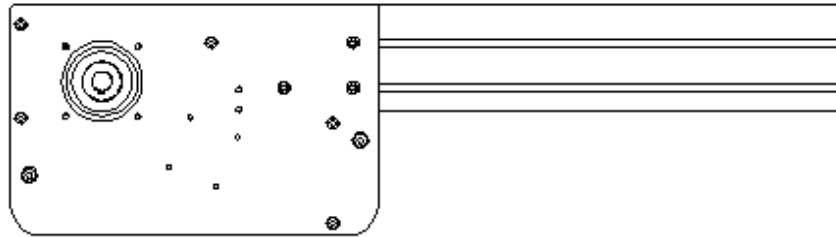
- Dampened stop units are located along the sections.
- Automatic chain tensioning is provided by a spring tensioning device.
- Elevation/sliding devices allow the workpiece carriers to go from one section to the next one.
- Positioning at the working place : precision = 0,5mm

TRM TYPE TRANSFER SYSTEM

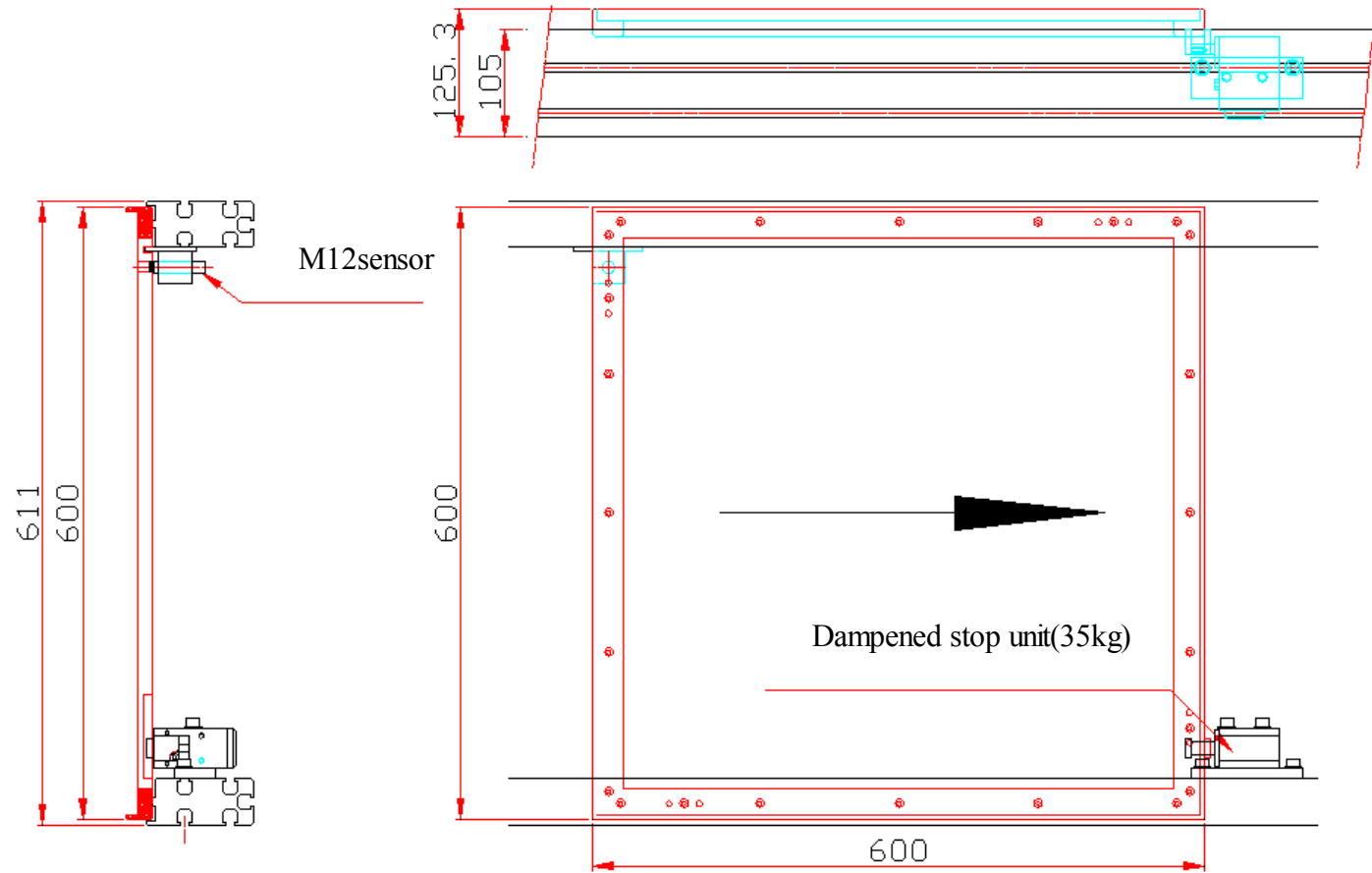
**Dimensions of
the profile :
45x105**

**SEW Motor
250W or 370W**

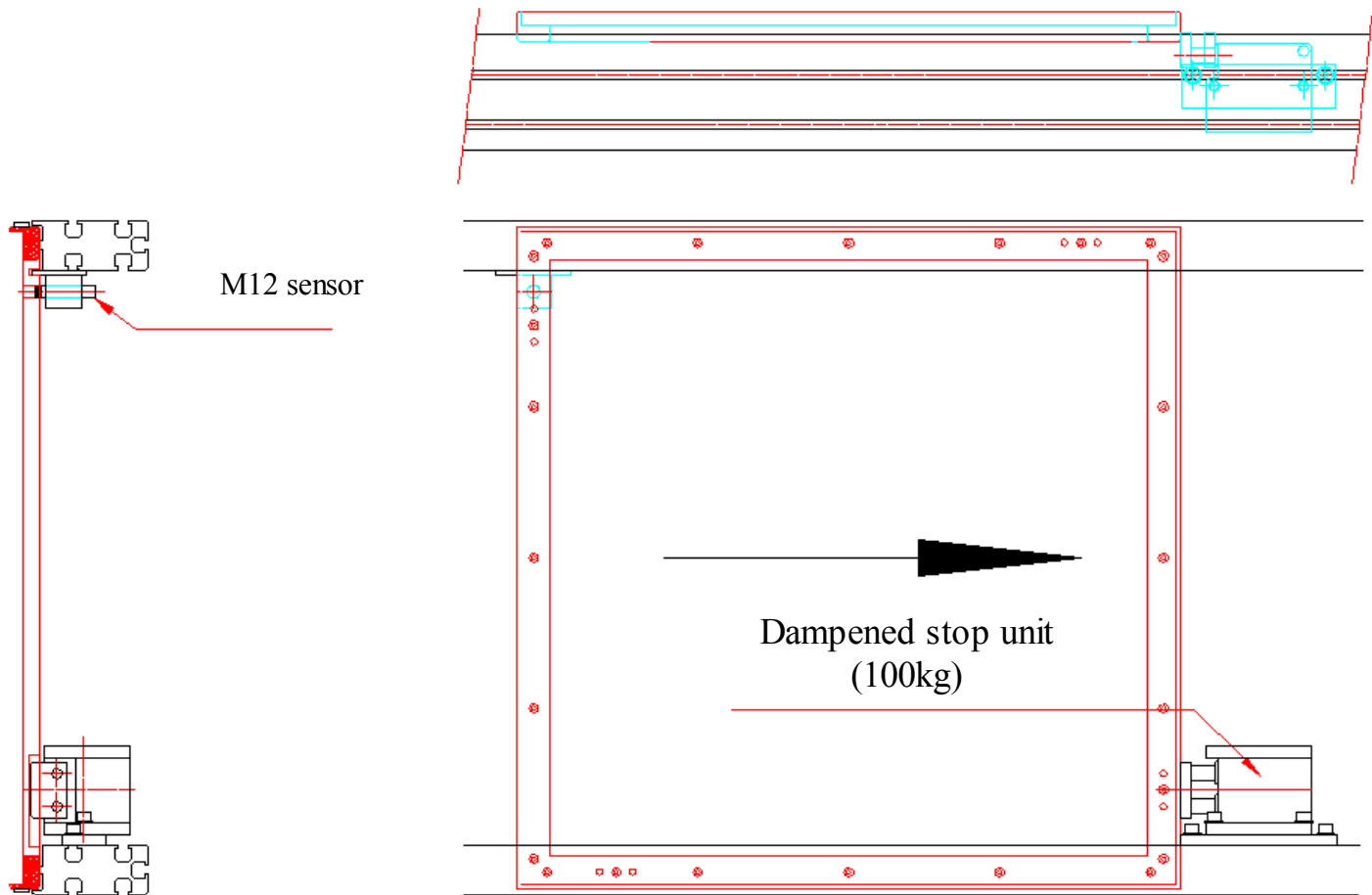
**available
range of speed :
4.5m/mn
6 m/mn
10 m/mn
12 m/mn
17 m/mn**



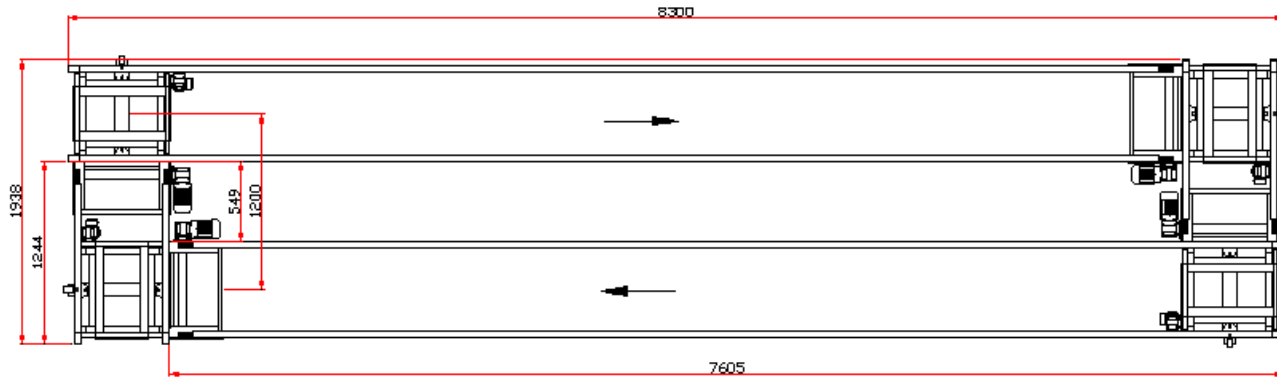
TRM TYPE TRANSFER SYSTEM



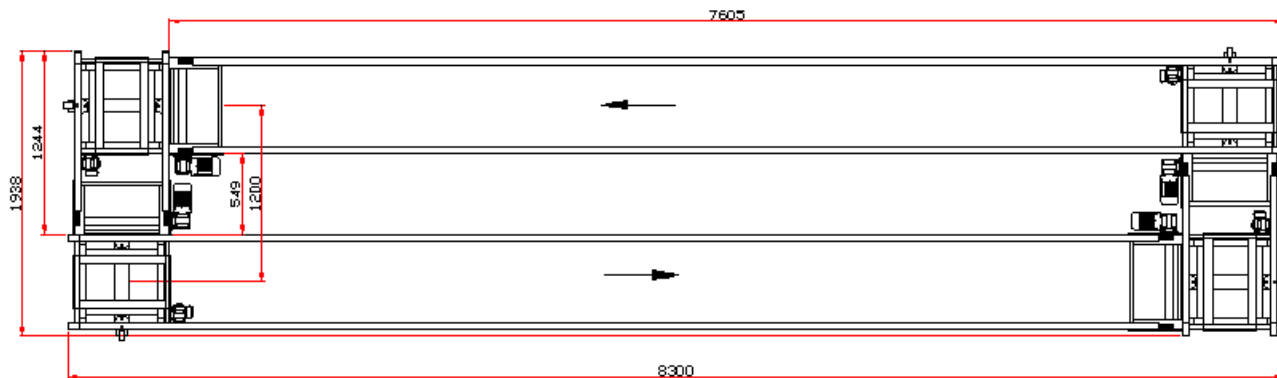
EXAMPLES OF CONFIGURATIONS



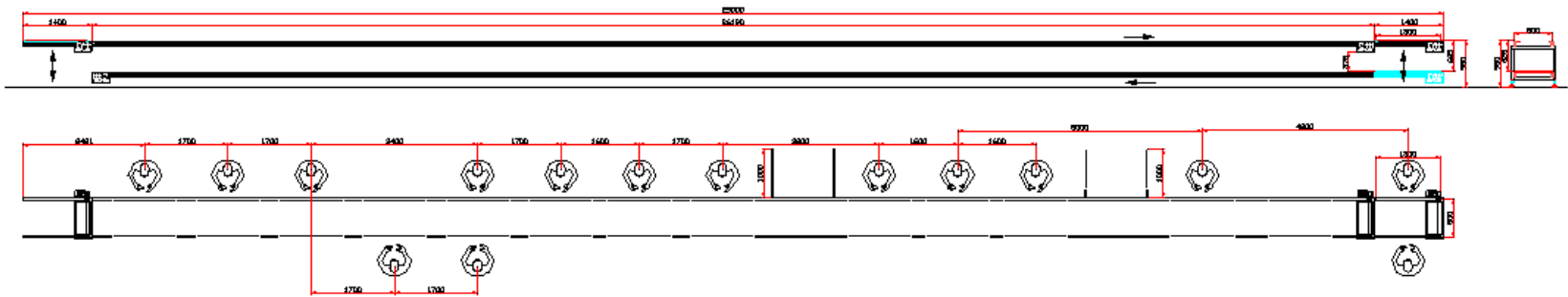
EXEMPLES OF CONFIGURATIONS



Workpiece carriers 640mm x 640 mm

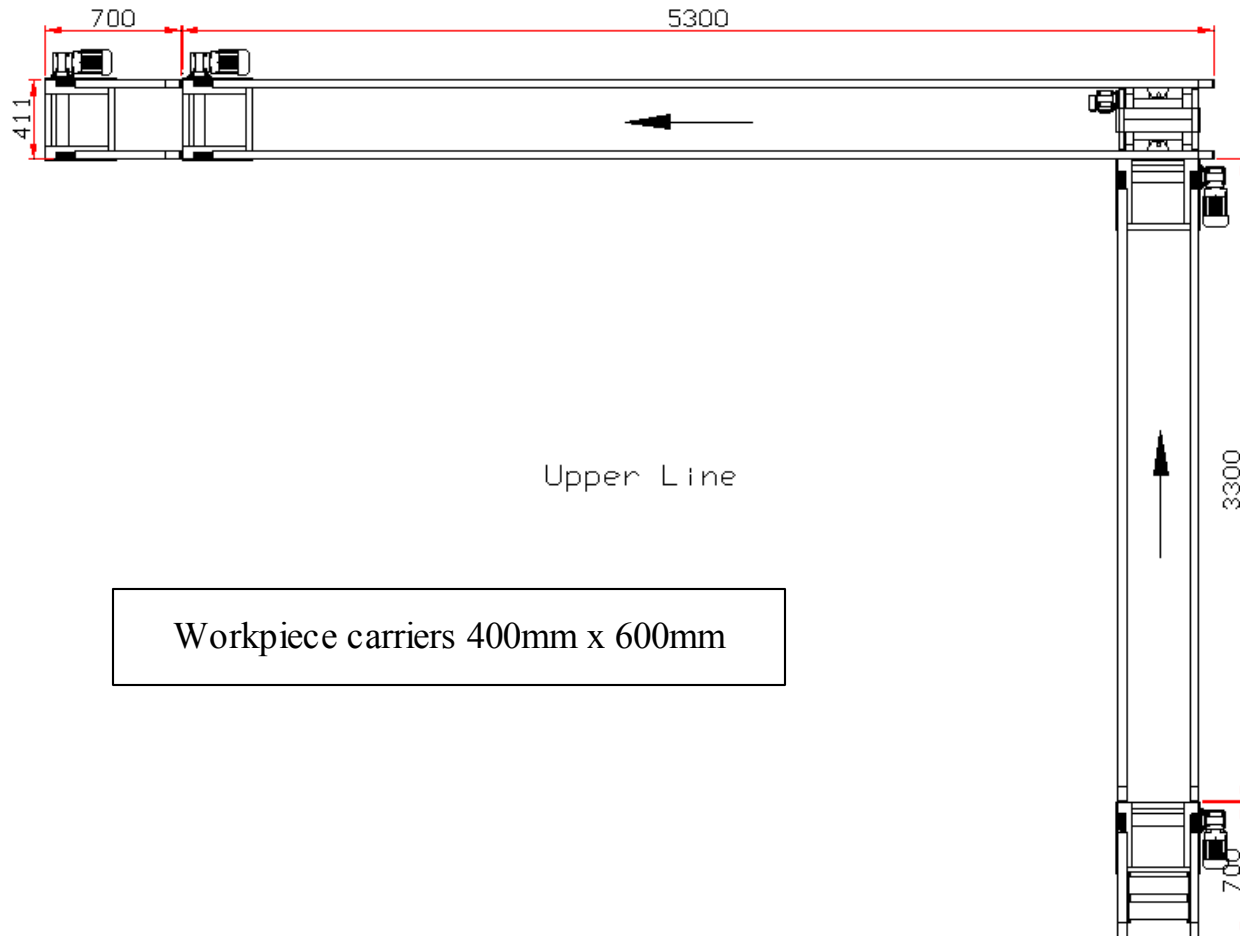


EXAMPLES OF CONFIGURATIONS



Workpiece carriers 0,8 m x 1,3 m

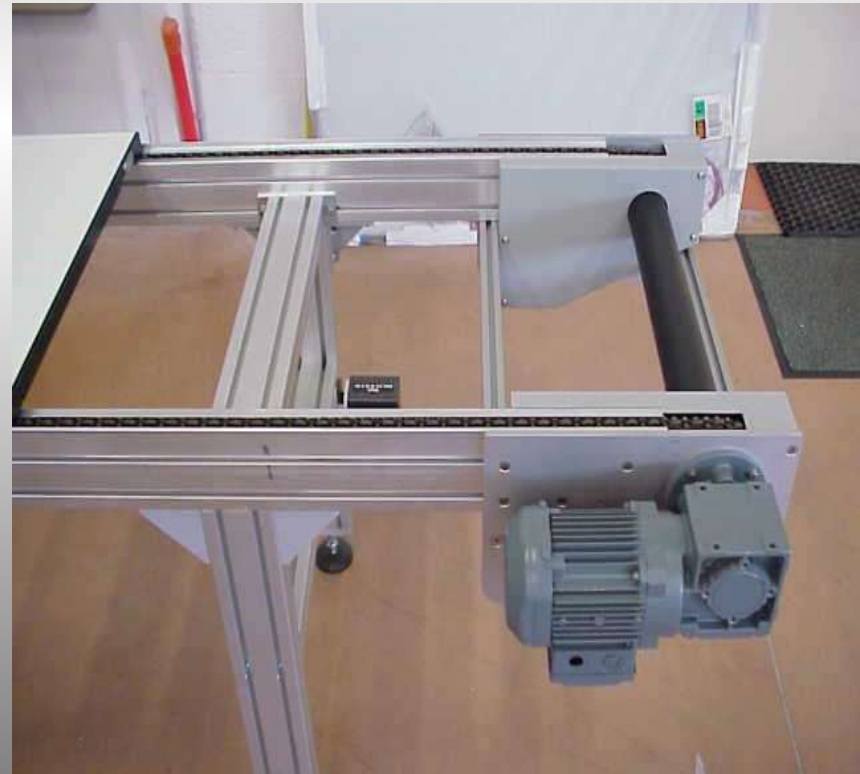
EXAMPLES OF CONFIGURATIONS



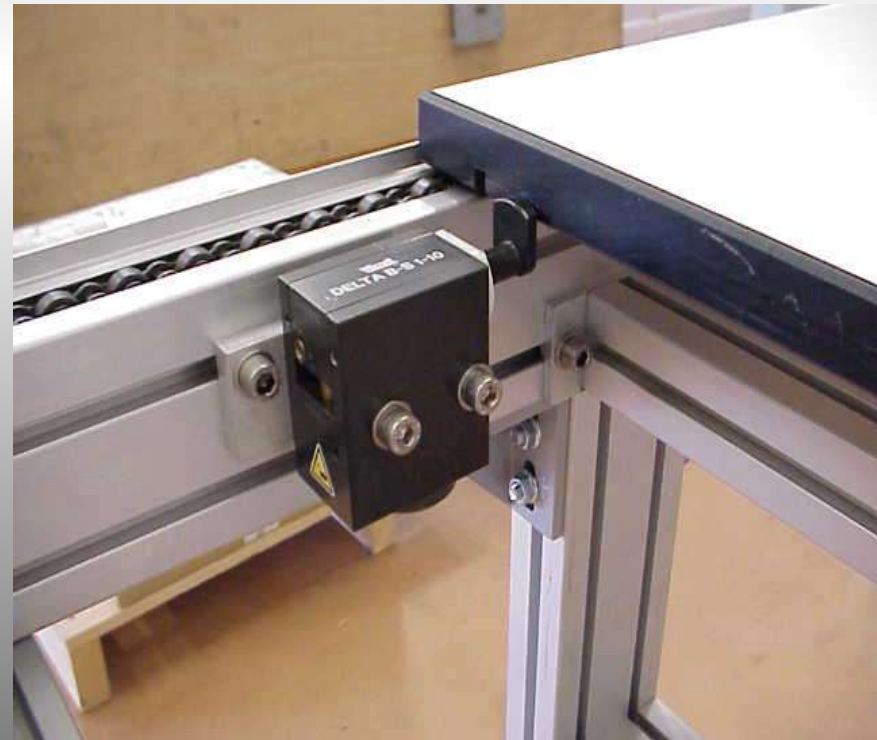
A FEW PICTURES



A FEW PICTURES



A FEW PICTURES



A FEW PICTURES

